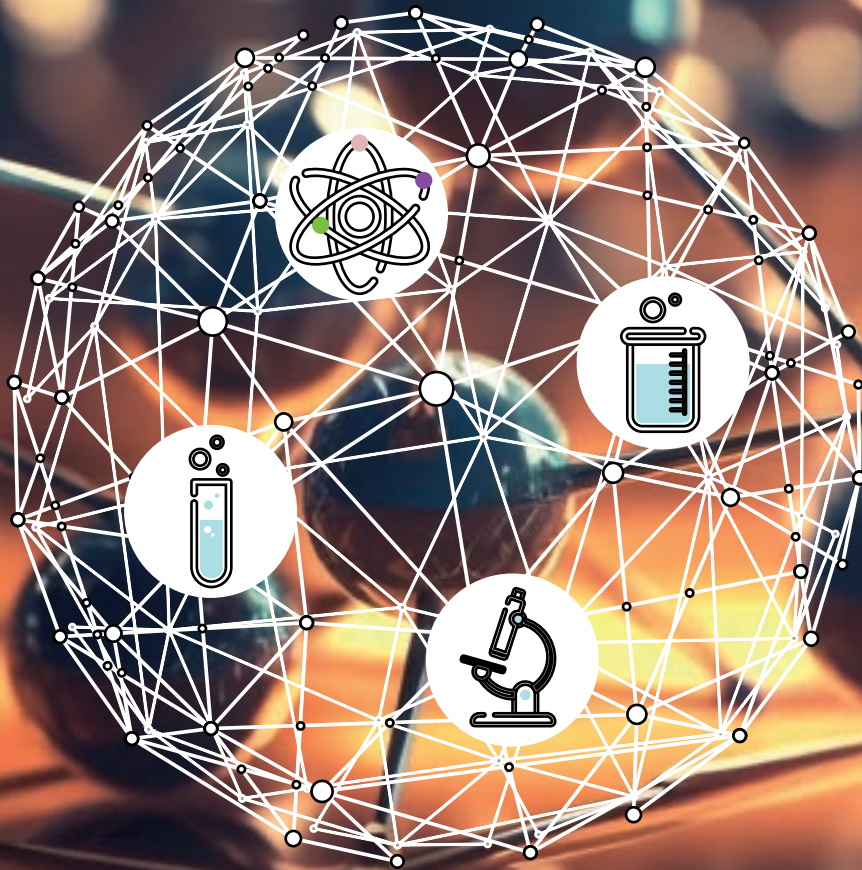


인증표준물질

Certified Reference Materials





중금속분석을 위한 시료전처리장치와 인증표준물질등 소모품 전문기업!



(주) 오디랩은 2008년 8월에 설립된 회사로 중금속분석에 사용되는 흑연블럭 산 분해장치인 에코프리 I, II, III 시리즈와 산 세척장치, 고순도 산 제조 장치, 유리분주기, ICP/ICP MS 소모품, 인증표준물질(CRM), 숙련도 평가물질 (PT) 등 을 제조, 수입판매하고 있습니다.

(주) 오디랩에서 제조 판매하는 흑연블럭 산 분해장비는 열선 가열판이나 마이크로웨이브의 단점을 보완한 제품으로 국내를 비롯하여 세계 7개국에 특허를 획득하였고 현재 해외로도 수출 중 에 있습니다.

또한 실험실에서 분석 데이터의 신뢰성확보를 위한 인증표준물질(CRM)과 표준물질(RM), 국제숙련도 물질을 전세계에서 수입하여 판매하고 있습니다. 인증표준물질은 고객이 찾으시는 제품을 탐색하여 드리고 있으며, 가장 근접한 제품으로 추천드리고 있습니다.

특히 유럽환경규제인 RoHS에 대응한 IEC62321 시험법에 나오는 인증표준 물질을 국내 시험평가기관이나 국가기관에 공급하고 있으며, 환경부에서 실시하는 정도관리에 대응하여 LGC사에서 제공하는 환경관련 숙련도 물질을 공급하고 있습니다.

**저희 (주) 오디랩은 화학실험실의 동반자로서
분석의 재현성과 정확성, 신뢰성 확보를 위해
언제나 고객의 노력과 함께 하겠습니다**

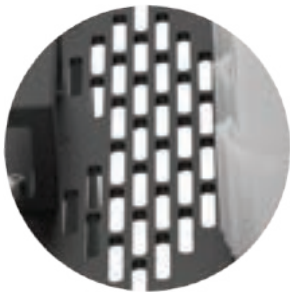
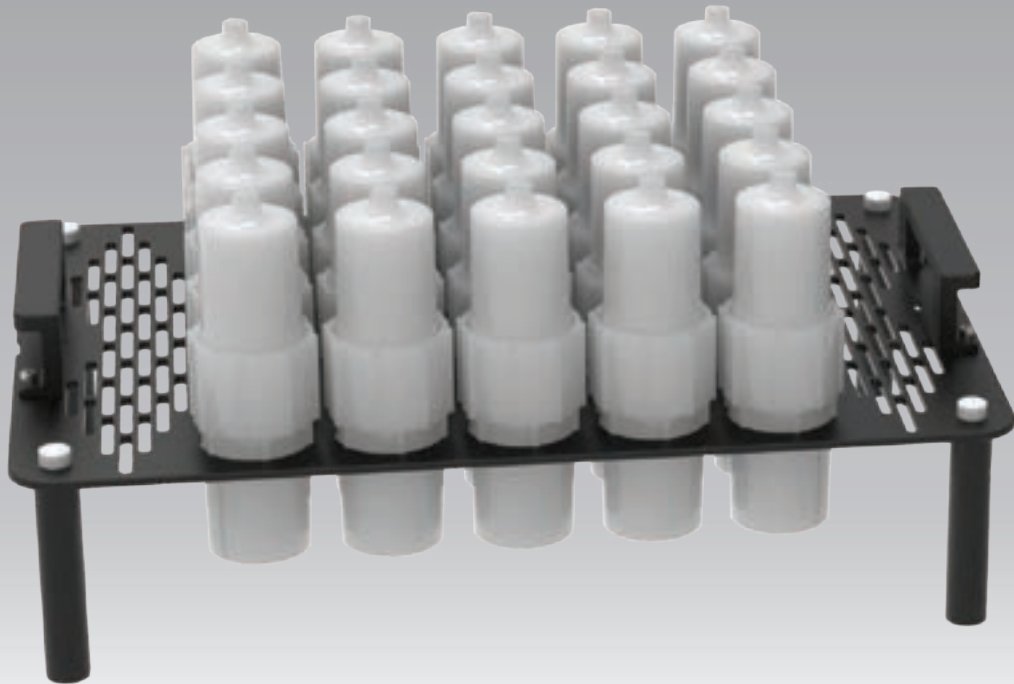
ODDLAB

자동 산분해장비

ADS25



견적문의



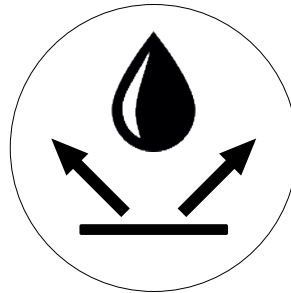
경량화 & 벤틸레이션

경량화 & 벤틸레이션 -



산순환 포집분해용기

산순환 포집분해용기 -



오염방지&내구성

오염방지&내구성 -



앱 연동 조작

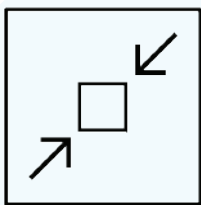
앱 연동 조작 -

이동 및 보관을 위해 플레이트를 타공디자인으로 경량화를 하였습니다 또한 타공을 통하여 원활하게 열기의 순환이 이루어 집니다.

좌우에 있는 리프트 장치로 산 순환 포집분해 용기 내부의 산을 가열 / 냉각 시켜서 사이펀 현상에 의해 리사이클 시켜 시료를 분해할 수 있도록 디자인 하였습니다.

SUS 재질사용 및 테프론 특수코팅을 하여 표면이 쉽게 오염되지 않도록 제작하였습니다. 또한 상부 가열부와 하부 전자제어부는 서로 격리, 밀봉되어 열 또는 산 증기로 인하여 전자제어장치가 손상되지않도록 되어있습니다.

20 Step 으로 가열 / 냉각 으로 분해조건을 프로그램화 할 수 있으며, 앱을 사용하여 조절가능합니다.



컴팩트한 사이즈

컴팩트한 사이즈 -



오토메틱 리프팅

오토메틱 리프팅 -

메뉴얼 및 프로그래밍 기능으로 반복적인 가열 / 냉각을 할 수 있도록 리프팅 기능이 있습니다.



균일한 온도

균일한 온도 -

흑연 소재를 사용하여 균일한 온도를 제공하고 ($\pm 1^{\circ}\text{C}$ 온도편차를 갖는다) 제어는 0.2°C 로 제어된다.



수동 승강버튼

수동 승강버튼 -

리프트 장치를 수동버튼을 사용하여 상부 랙(Rack)을 상하로 움직여 사용자가 원할 시 용기의 상태를 언제든지 확인 할 수 있습니다.



GLASS EXPANSION

Quality By Design

ICP-OES / ICP-MS

모든 메이커 (애질런트, 씨모, 퍼킨..etc) 전제품



견적문의

Food Animal Plants Drink

Food, Animal Plants, Drink

Code	Product	Unit
0711-C3	Rf2 canola leaf tissue genomic DNA Certified value Homozygous Rf2 DNA present > 999.99 ng/μg	0.5 ml
0306-G7	Rf3 canola leaf tissue genomic DNA Certified value Homozygous Rf3 DNA present > 999.99 ng/μg	0.5 ml
0711-C3	Topas 19/2 canola leaf tissue genomic DNA Certified value Homozygous Topas 19/2 DNA present > 999.99 ng/μg	0.5 ml
1116-A	Ms11 canola leaf tissue genomic DNA Certified value Hemizygous Ms11 DNA present > 999.99 ng/ug	0.5 ml
0306-F8	Ms8 canola leaf tissue genomic DNA Certified value Hemizygous Ms8 DNA present > 999.99 ng/μg	0.5 ml
0208-A7	T45 canola leaf tissue genomic DNA Certified value Homozygous T45 canola DNA present > 999.99 ng/μg	0.5 ml
0711-B3	Rf1 canola leaf tissue genomic DNA Certified value Homozygous Rf1 DNA present > 999.99 ng/μg	0.5 ml
1011-A2	MON 88302 Canola OECD Unique ID MON-88302-9 Certified value MON 88302 canola present ≥ 991 g/kg	10 g
0304-B3	GT73/RT73 Canola OECD Unique ID MON- 00073-7 Certified value GT73/RT73 canola present ≥ 992 g/kg	10 g
0421-A	MON 94100 Canola OECD Unique ID MON-94100-2 Certified value MON 94100 canola present ≥ 989 g/kg	10 g
0304-A3	Non-modified canola Certified value GT73/RT73, MON 94100 and MON 88302 canola absent ≥ 989 g/kg	10 g
0306-E3	LLCotton25 cotton leaf tissue genomic DNA Certified value Homozygous LLCotton25 DNA present > 999.99 ng/μg	0.5 ml
0306-A3	Non-modified cotton leaf tissue genomic DNA Certified value LLCotton25 and GHB614 cotton DNA absent < 0.05 ng/μg LLCotton25 DNA, < 0.05 ng/μg GHB614 DNA	0.5 ml

Food, Animal Plants, Drink

Code	Product	Unit
0804-B2	Cotton Monsanto Event MON1445 powder The MON 1445 cotton seed used in the preparation of AOCS 0804-B2 was homozygous resulting from several cycles of self-pollination of the MON 1445 line. Certified value MON 1445 cotton present ≥ 991 g/kg	10 g
0804-D2	Cotton Monsanto Event MON15985-7 powder Certified value MON 15985 cotton present ≥ 996 g/kg	10 g
0804-C2	Cotton Monsanto Event MON531 powder Certified value MON 531 cotton present ≥ 978 g/kg	10 g
0113-A2	Cotton Monsanto Event MON88701 powder Certified value MON 88701 cotton present ≥ 991 g/kg	10 g
0906-D2	Cotton Monsanto Event MON88913 powder Certified value MON 88913 cotton present ≥ 985 g/kg	10 g
0804-A2	Cotton Monsanto Event Non-Modified powder Certified value MON 1445, MON 88701, MON 531, MON 15985 and MON 88913 absent < 0.8 g/kg	10 g
1012-A2	Cotton Syngenta Non-Modified powder Certified value COT102 cotton absent < 1 g/kg	10 g
0306-C4	Maize BASF Agricultural Solutions Seed US LLC Nonmodified DNA Certified value T25 DNA absent < 0.05 ng/ μ g T25 DNA	0.5 mL
0306-H11	Maize BASF Event T25 Leaf DNA 0306-H11 Certified value Homozygous T25 DNA present > 999.99 ng/ μ g T25 DNA	0.5 mL
0709-A2	Maize Monsanto Company Event MON 87460 Powder Certified value MON 87460 maize present ≥ 996 g/kg	10 g
0512-A2	MON 87427 Maize OECD Unique ID MON-87427-7 Certified value MON 87427 maize present ≥ 994.8 g/kg	10 g

Food, Animal Plants, Drink

Code	Product	Unit
0406-D2	MON 88017 Maize OECD Unique ID MON-88017-3 Certified value MON 88017 maize present ≥ 990.7 g/kg	10 g
0906-E2	MON 89034 Maize OECD Unique ID MON-89034-3 Certified value MON89034 maize present ≥ 996 g/kg	10 g
0215-B	MON 87411 Maize OECD Unique ID MON-87411-9 Certified value MON 87411 maize present ≥ 996 g/kg	10 g
0406-A2	Non-modified maize Certified value MON 87411, MON 87403, MON 88017 MON 89034, MON 87460, MON 87427 and MON 84719 absent < 0.8 g/kg	10 g
0216-A	Maize Monsanto MON 87403 Powder OECD Unique ID MON-87403-1 Certified value MON 87403 maize present ≥ 991 g/kg	10 g
1114-C	Maize Syngenta Crop Protection LLC Event MZHGOJG powder Certified value NP2391/NP2222 (MZHGOJG) maize present ≥ 964 g/kg	10 g
1114-B2	Maize Syngenta Crop Protection LLC Event MZIR098 powder Certified value NP2391/NP2222 (MZIR098) maize pre-sent ≥ 962 g/kg	10 g
0407-B	Maize Syngenta Event GA21 Powder Certified value GA21 DNA present ≥ 991.5 g/kg	10 g
1208-A3	Maize Syngenta Event MIR 162 Powder Certified value NP2222(MIR162)/NP2391 maize present ≥ 993 g/kg	10 g
0411-CD2	Non-modified maize Certified value 5307 maize DNA absent < 1 g/kg	10 g
0407-A	Non-modified maize Certified value Absent of GA21, MIR162 MIR604 and MZHGOJG maize < 1 g/kg	10 g
0917-A	Non-modified maize Certified value Absence of MIR162 and MIR604 maize < 1 g/kg	10 g

Food, Animal Plants, Drink

Code	Product	Unit
0919-A	Non-modified maize Certified value MIR162, MZHG0JG and MZIR098 maize DNA absent < 0.4 g/kg	10 g
0306-I9	LLRice62 Rice leaf tissue genomic DNA Certified value Non-modified Pure, Homozygous non-modified Rice	0.5 ml
0411-A2	Non-modified soybean Certified value SYHT0H2 soybean DNA absent < 0.2 g/kg	10 g
0911-C2	CV127 soybean OECD Unique ID BPS-CV127-9 Certified value CV127 soybean present ≥ 963 g/kg	10 g
0707-B14	A2704-12 soybean leaf tissue genomic DNA Certified value Homozygous A2704-12 DNA present > 999.99 ng/μg	0.5 ml
0707-C8	A5547-127 soybean leaf tissue genomic DNA Certified value Homozygous A5547-127 DNA present > 999.99 ng/μg	0.5 ml
0610-A6	FG72 soybean leaf tissue genomic DNA Certified value Homozygous FG72 DNA present >999.99 ng/ug	0.5 ml
0911-D	CV127 soybean (1g) OECD Unique ID BPS-CV127-9 Certified value CV127 soybean present < 1 g/kg	1 g
0911-A	Non-modified soybean Certified value CV127 soybean absent ≤ 1.0 g/kg	10 g
0911-B	Non-modified soybean (1g vial) Certified value CV127 soybean absent ≤ 1.0 g/kg	1 g
0311-A2	MON 87708 Soybean OECD Unique ID MON-87708-9 Certified value MON 87708 soybean present ≥ 993 g/kg	10 g
0210-A2	MON 87705 soybean OECD Unique ID MON-87705-6 Certified value MON 87705 soybean present ≥ 992 g/kg	10 g
0215-A	MON 87751 Soybean OECD Unique ID MON-87751-7 Certified value MON 87751 soybean present ≥ 996 g/kg	10 g

Food, Animal Plants, Drink

Code	Product	Unit
0809-B2	MON 87769 soybean OECD Unique ID MON-87769-7 Certified value MON 87769 soybean present ≥ 996 g/kg	10 g
0906-B2	MON 89788 Soybean OECD Unique ID MON-89788-1 Certified value MON89788 soybean present ≥ 996 g/kg	10 g
0906-A2	Non-modified soybean Certified value MON 87701, MON 87708, MON 87751 and MON 87769 absent; MON 89788 and MON 87705 below LOQ < 0.8 g/kg	10 g
0809-A2	Soybean Monsanto MON87701 powder Certified value MON87701 Soybean present ≥ 984 g/kg	10 g
0112-A2	SYHT0H2 Soybean OECD Unique Identifier SYN-ØØØH2-5 Certified value SYHT0H2 soybean DNA present ≥ 992 g/kg	10 g
BAM-U030	Pentachlorophenol in wood Certified value Pentachlorophenol 7.17 mg/kg	40 g
BAM-U130	Trace elements in wood Certified value As 4.0 mg/kg Cd 2.52 mg/kg Cr 39.3 mg/kg Cu 30.0 mg/kg Hg 0.66 mg/kg Pb 41 mg/kg	36 g
ERM-BD272	Acrylamide in Crispbread Certified value Acrylamide 0.98 mg/kg	68 g
ERM-BC600	Fusarium mycotoxins in wheat flour Certified value Deoxynivalenol (DON) $102 \mu\text{g kg}^{-1}$ Nivalenol (NIV) $1000 \mu\text{g kg}^{-1}$ Zearalenone (ZON) $90 \mu\text{g kg}^{-1}$	81 g
ERM-BC715	Zearalenone in maize germ oil Certified value Zearalenone $362 \mu\text{g kg}^{-1}$	9 mL
ERM-BC720	T-2 and HT-2 toxin in oat flakes Certified value T-2 toxin $82 \mu\text{g kg}^{-1}$ HT-2 toxin $81 \mu\text{g kg}^{-1}$	94 g

Food, Animal Plants, Drink

Code	Product	Unit
ERM-BD513	Cd in Cocoa	8 g
	Certified value Cd 0.181 mg/kg	
ERM-BD514	Cd in Cocoa	8 g
	Certified value Cd 0.541 mg/kg	
ERM-BD515	Cd in Cocoa	8 g
	Certified value Cd 0.690 mg/kg	
BCR-596	AQUATIC PLANT	25 g
	Certified value Cr 36.3 mg/kg	
BCR-129	HAY POWDER	30 g
	Certified value	
	Ca 6.40 g/kg	
	I 0.167 mg/kg	
	K 33.8 g/kg	
	Kjeldahl-N 34.2 g/kg	
	Mg 1.45 g/kg	
	N 37.2 g/kg	
	P 2.36 g/kg	
	S 3.16 g/kg	
Zn 32.1 mg/kg		
BCR-402	WHITE CLOVER	25 g
	Certified value	
	As 0.093 mg/kg	
	Co 0.178 mg/kg	
	Mo 6.93 mg/kg	
Se 6.70 mg/kg		
BCR-414	PLANKTON	5 g
	Certified value	
	As 6.82 mg/kg	
	Cd 0.383 mg/kg	
	Cr 23.8 mg/kg	
	Cu 29.5 mg/kg	
	Hg 0.276 mg/kg	
	Mn 299 mg/kg	
	Ni 18.8 mg/kg	
	Pb 3.97 mg/kg	
	Se 1.75 mg/kg	
V 8.10 mg/kg		
Zn 111.6 mg/kg		
BCR-482	LICHEN	15 g
	Certified value	
	Al 1103 mg/kg	
	As 0.85 mg/kg	
Cd 0.56 mg/kg		

Food, Animal Plants, Drink

Code	Product	Unit
	Cr	4.12 mg/kg
	Cu	7.03 mg/kg
	Hg	0.48 mg/kg
	Ni	2.47 mg/kg
	Pb	40.9 mg/kg
	Zn	100.6 mg/kg
ERM-CD200	SEAWEED	5 g
	The sample consists of at least 5 g of dried, powdered and homogenised bladderwrack (<i>Fucus vesiculosus</i>).	
	Certified value	
	As	55 mg/kg
	Cd	0.95 mg/kg
	Cu	1.71 mg/kg
	Hg	0.0186 mg/kg
	Pb	0.51 mg/kg
	Se	0.088 mg/kg
	Zn	25.3 mg/kg
BCR-670	AQUATIC PLANT	10 g
	Information on the preparation and the certification of the rare earth elements Ce, Dy, Er, Eu, Gd, Ho, La, Lu, Nd, Pr, Sc, Sm, Tb, Tm, Y and Yb and of the elements Th and U is given in the certification report.	
	Certified value	
	Ce	0.99 mg/kg
	Dy	79 µg/kg
	Er	44.0 µg/kg
	Eu	23.2 µg/kg
	Gd	98 µg/kg
	Ho	15.8 µg/kg
	La	0.487 mg/kg
	Lu	6.3 µg/kg
	Nd	0.473 mg/kg
	Pr	0.121 mg/kg
	Sc	0.191 mg/kg
	Sm	94 µg/kg
	Tb	14.0 µg/kg
	Tm	5.7 µg/kg
	Y	0.46 mg/kg
	Yb	40 µg/kg
	Th	0.159 mg /kg
	U	82 µg/kg
ERM-CE278k	MUSSEL TISSUE	8 g
	Certified value	
	As	6.7 mg/kg
	Cd	0.336 mg/kg
	Cr	0.73 mg/kg
	Cu	5.98 mg/kg
	Fe	161 mg/kg
	Hg	0.071 mg/kg

Food, Animal Plants, Drink

Code	Product	Unit
	Mn	4.88 mg/kg
	Ni	0.69 mg/kg
	Pb	2.18 mg/kg
	Rb	2.46 mg/kg
	Se	1.62 mg/kg
	Sr	19.0 mg/kg
	Zn	71 mg/kg

ERM-CE101 TROUT MUSCLE 40 g

ERM-CE101 consists of 40 g of homogenised, heat-treated fish muscle contained in a glass jar fitted with a lid featuring an indicator of vacuum integrity.

Certified value

Hg	0.0219 mg/kg
As	0.175 mg/kg
Fe	3.1 mg/kg
Mn	0.108 mg/kg
Se	0.113 mg/kg
Zn	4.5 mg/kg

BCR-668 MUSSEL TISSUE 10 g

Information on the preparation and the certification of the rare earth elements Ce, Dy, Er, Eu, Gd, La, Lu, Nd, Pr, Sm, Tb, Tm and Y, and of the elements Th and U is given in the certification report.

Certified value

Ce	89 µg/kg
Dy	8.9 µg/kg
Er	4.5 µg/kg
Eu	2.79 µg/kg
Gd	13.0 µg/kg
La	80 µg/kg
Lu	0.389 µg/kg
Nd	54 µg/kg
Pr	12.3 µg/kg
Sm	11.2 µg/kg
Tb	1.62 µg/kg
Tm	0.48 µg/kg
Y	59 µg/kg
Th	10.7 µg/kg
U	56 µg/kg

ERM-CE464 TUNA FISH 15 g

The material consists of a freeze-dried fish powder in a glass bottle. The bottle contains about 15 g of powder.

Certified value

Total Hg	5.24 mg/kg
CH ₃ Hg ⁺	5.50 mg/kg

Food, Animal Plants, Drink

Code	Product	Unit
ERM-CE477	MUSSEL TISSUE The material consists of a dried mussel tissue in a glass bottle. The bottle contains about 14 g of powder. Additional information on the preparation and the certified values is given in the certification report. Certified value TBT: Sn(C ₄ H ₉) ₃ ⁺ 2.20 mg/kg DBT: Sn(C ₄ H ₉) ₂ ²⁺ 1.54 mg/kg MBT: Sn(C ₄ H ₉) ₃ ⁺ 1.50 mg/kg	14 g
BCR-627	TUNA FISH TISSUE The sample is a dried, homogenised and sterilised tuna fish muscle tissue in brown glass bottles each containing at least 10 g material. Certified value Arsenobetaine 52 µmol/kg Dimethylarsinic acid 2.0 µmol/kg Total arsenic 4.8 µmol/kg	10 g
ERM-BC211	RICE The amber glass vial contains a minimum amount of 10 g of rice powder. Certified value Total arsenic 260 µg/kg Dimethylarsinic acid 119 µg/kg The sum of arsenite and arsenate 124 µg/kg	10 g
BCR-683	BEECH WOOD The material is available in 250 mL brown glass bottles closed with a screw cap, containing approximately 60 g of a ground wood material with a particle top size of 1.0 mm. Certified value Pentachlorophenol 3.6 mg/kg Benz[a]anthracene 6.5 mg/kg Benzo[a]pyrene 3.4 mg/kg Benzo[e]pyrene 9.3 mg/kg Benzo[b]fluoranthene 5.8 mg/kg Benzo[k]fluoranthene 2.58 mg/kg	60 g
BCR-682	MUSSEL TISSUE The sample consists of approximately 70 g of minced mussel tissue stabilised with butylhydroxytoluene in coated containers. Information on the presence of additional polychlorinated biphenyls other than those tabulated is given in the certification report. Certified value PCB 28 2,4,4'-Trichlorobiphenyl 0.30 µg/kg PCB 52 2,2',5,5'-Tetrachlorobiphenyl 0.78 µg/kg PCB 118 2,3',4,4',5-Pentachlorobiphenyl 2.6 µg/kg PCB 138 2,2',3,4,4',5'-Hexachlorobiphenyl 4.6 µg/kg PCB 149 2,2',3,4',5',6-Hexachlorobiphenyl 5.7 µg/kg PCB 153 2,2',4,4',5,5'-Hexachlorobiphenyl 9.2 µg/kg PCB 170 2,2',3,3',4,4',5-Heptachlorobiphenyl 0.17 µg/kg PCB 180 2,2',3,4,4',5,5'-Heptachlorobiphenyl 0.77 µg/kg	70 g

Food, Animal Plants, Drink

Code	Product	Unit
ERM-BF412ak	MAIZE POWDER ERM-BF440ak is one of the five Bt11 maize powder certified reference materials containing different mass fractions of this genetically modified maize. ERM-BF412ak has been produced from whole seeds of non-genetically modified maize supplied by Syngenta Crop Protection LLC (North Carolina, US). Certified value Bt11 maize < 0.12 g/kg	1 g
ERM-BF412bk	MAIZE POWDER Certified value Bt11 maize > 970 g/kg	1 g
ERM-BF412ck	MAIZE POWDER Certified value Bt11 maize 0.99 g/kg	1 g
ERM-BF412dk	MAIZE POWDER Certified value Bt11 maize 9.9 g/kg	1 g
ERM-BF412ek	MAIZE POWDER Certified value Bt11 maize 99 g/kg	1 g
ERM-BF413ak	MAIZE SEED POWDER ERM-BF413ak is a maize powder prepared from whole seeds of a conventional, non-modified maize (variety EXP258B) delivered by Monsanto Company (St. Louis, MO, USA). Certified value MON 810 maize < 0.9 g/kg	1 g
ERM-BF413ck	MAIZE SEED POWDER Certified value MON 810 maize 4.9 g/kg	1 g
ERM-BF413ek	MAIZE SEED POWDER Certified value MON 810 maize mass fraction 19.8 g/kg MON 810 maize DNA copy number ratio 0.77 %	1 g
ERM-BF414a	DRIED MAIZE POWDER ERM-BF414a is part of a set of CRMs of dried maize powder with different mass fractions (< 0.8, 1.0, 4.9, 9.9, 17.2, 42.9 g/kg) of dried powder from genetically modified GA21 Roundup Ready maize Certified value GA21 maize content < 0.8 g/kg	1 g
ERM-BF414b	DRIED MAIZE POWDER Certified value GA21 maize content 1.0 g/kg	1 g

Food, Animal Plants, Drink

Code	Product	Unit
BCR-657	SUGAR The sample consists of approximately 1 g of dry glucose in a sealed amber vial. Certified value $\delta^{13}\text{C}_{\text{VPDB}}$ -10.76 %	1 g
BCR-660	WINE ETHANOL (12 % VOL.) The sample consists of approximately 370 mL of an aqueous solution of 12 % vol. neutral ethanol from wine origin. Certified value *Site-specific deuterium isotope ratio (D/H) _I determined by ² H-NMR 102.90 x10 ⁻⁶ *Site-specific deuterium isotope ratio (D/H) _{II} determined by ² H-NMR 131.95 x10 ⁻⁶ *Relative deuterium isotope ratio R determined by ² H-NMR 2.567 * $\delta^{13}\text{C}_{\text{VPDB}}$ measured by IRMS -26.72 ‰ *Alcoholic grade (volume fraction of ethanol) t _Q 11.96 % *(D/H) _w water determined by IRMS 148.68 x10 ⁻⁶	365 g
ERM-BF411a	DRIED MAIZE POWDER ERM-BF411 is part of a set of CRMs of dried maize powder with different mass fractions of dried powder from genetically modified Bt-176 maize. According to Commission Regulation (EC) No 65/2004 the Bt-176 maize received the unique identifier code SYN-EV176-9. Certified value Bt-176 maize < 0.14 g/kg	1 g
ERM-BF411b	DRIED MAIZE POWDER Certified value Bt-176 maize 1.00 g/kg	1 g
ERM-BF411c	DRIED MAIZE POWDER Certified value Bt-176 maize 5.0 g/kg	1 g
ERM-BF411d	DRIED MAIZE POWDER Certified value Bt-176 maize 10.0 g/kg	1 g
ERM-BF411e	DRIED MAIZE POWDER Certified value Bt-176 maize 20.0 g/kg	1 g
ERM-BF411f	DRIED MAIZE POWDER Certified value Bt-176 maize 50.0 g/kg	1 g
ERM-BF411g	DRIED MAIZE POWDER Certified value Bt-176 maize 1000 g/kg	1 g

Food, Animal Plants, Drink

Code	Product	Unit
ERM-BF412ak	MAIZE POWDER ERM-BF440ak is one of the five Bt11 maize powder certified reference materials containing different mass fractions of this genetically modified maize. ERM-BF412ak has been produced from whole seeds of non-genetically modified maize supplied by Syngenta Crop Protection LLC (North Carolina, US). Certified value Bt11 maize < 0.12 g/kg	1 g
ERM-BF412bk	MAIZE POWDER Certified value Bt11 maize > 970 g/kg	1 g
ERM-BF412ck	MAIZE POWDER Certified value Bt11 maize 0.99 g/kg	1 g
ERM-BF412dk	MAIZE POWDER Certified value Bt11 maize 9.9 g/kg	1 g
ERM-BF412ek	MAIZE POWDER Certified value Bt11 maize 99 g/kg	1 g
ERM-BF413ak	MAIZE SEED POWDER ERM-BF413ak is a maize powder prepared from whole seeds of a conventional, non-modified maize (variety EXP258B) delivered by Monsanto Company (St. Louis, MO, USA). Certified value MON 810 maize < 0.9 g/kg	1 g
ERM-BF413ck	MAIZE SEED POWDER Certified value MON 810 maize 4.9 g/kg	1 g
ERM-BF413ek	MAIZE SEED POWDER Certified value MON 810 maize mass fraction 19.8 g/kg MON 810 maize DNA copy number ratio 0.77 %	1 g
ERM-BF414a	DRIED MAIZE POWDER ERM-BF414a is part of a set of CRMs of dried maize powder with different mass fractions (< 0.8, 1.0, 4.9, 9.9, 17.2, 42.9 g/kg) of dried powder from genetically modified GA21 Roundup Ready maize Certified value GA21 maize content < 0.8 g/kg	1 g
ERM-BF414b	DRIED MAIZE POWDER Certified value GA21 maize content 1.0 g/kg	1 g

Food, Animal Plants, Drink

Code	Product	Unit
ERM-BF414c	DRIED MAIZE POWDER Certified value GA21 maize content 4.9 g/kg	1 g
ERM-BF414d	DRIED MAIZE POWDER Certified value GA21 maize content 9.9 g/kg	1 g
ERM-BF415e	MAIZE SEED POWDER ERM-BF415e is a powder mixture produced from whole seeds of a non-modified maize and the genetically modified maize NK603 both delivered by Monsanto (St. Louis, MO, US). In accordance with European Commission regulation (EC) No 65/2004, the maize NK603 event received the unique identifier maize MON-ØØ6Ø3-6. According to the information provided by Monsanto the genetically modified donor for the heterozygous NK603 maize was the female parent. Certified value NK603 maize mass fraction 19.6 g/kg NK603 maize DNA copy number ratio 0.95 %	1 g
ERM-BF416a	DRIED MAIZE POWDER This reference material has been produced from whole kernels of non-modified maize (variety 'RX670') of seed quality and delivered by Monsanto (St. Louis, MO, USA). According to European Commission regulation (EC) No 65/2004 the event MON 863 maize received the unique identifier MON-ØØ863-5. According to the information provided by Monsanto the genetically modified donor for the heterozygous MON 863 maize was the female parent. Certified value MON 863 maize < 1.0 g/kg	1 g
ERM-BF416b	DRIED MAIZE POWDER Certified value MON 863 maize 1.0 g/kg	1 g
ERM-BF416c	DRIED MAIZE POWDER Certified value MON 863 maize 9.8 g/kg	1 g
ERM-BF416d	DRIED MAIZE POWDER Certified value MON 863 maize 98.5 g/kg	1 g
ERM-BF417a	DRIED MAIZE POWDER This reference material has been produced from whole kernels of non-modified maize (variety 'RX670') of seed quality and delivered by Monsanto (St. Louis, MO, USA). According to European Commission regulation (EC) No 65/2004 the breeding stack event MON 863 x MON 810 maize received the unique identifier MON-ØØ863-5 x MON-ØØ810-6.	1 g

Food, Animal Plants, Drink

Code	Product	Unit
	Certified value MON 863 x MON 810 maize < 1.0 g/kg	
ERM-BF417b	DRIED MAIZE POWDER This reference material has been produced from whole kernels of non-modified maize (variety 'RX670') and MON 863 x MON 810 maize (hybrid line 'TP6705-BG') both of seed quality and delivered by Monsanto (St. Louis, MO, USA). According to European Commission regulation (EC) No 65/2004 the breeding stack event MON 863 x MON 810 maize received the unique identifier MON-ØØ863-5 x MON-ØØ810-6. According to the information provided by Monsanto the heterozygous MON 863 x MON 810 maize is a crossing of female genetically modified MON 863 with male genetically modified MON 810 maize. Certified value MON 863 x MON 810 maize 1.0 g/kg	1 g
ERM-BF417c	DRIED MAIZE POWDER Certified value MON 863 x MON 810 maize 9.8 g/kg	1 g
ERM-BF417d	DRIED MAIZE POWDER Certified value MON 863 x MON 810 maize 98.5 g/kg	1 g
ERM-BF418a	MAIZE SEED POWDER This reference material has been produced from whole kernels of non-modified maize of seed quality delivered by Pioneer Hi-Bred International (Johnston, IA, USA). According to European Commission regulation (EC) No 65/2004 the event 1507 maize received the unique identifier DAS-Ø15Ø7-1. Certified value 1507 maize < 0.5 g/kg	1 g
ERM-BF418b	DRIED MAIZE POWDER Certified value 1507 maize 1.0 g/kg	1 g
ERM-BF418c	DRIED MAIZE POWDER Certified value 1507 maize 9.9 g/kg	1 g
ERM-BF418d	DRIED MAIZE POWDER Certified value 1507 maize 98.6 g/kg	1 g
ERM-BF418d	DRIED MAIZE POWDER Certified value 1507 maize 98.6 g/kg	1 g

Food, Animal Plants, Drink

Code	Product	Unit
ERM-BF420a	MAIZE SEED POWDER ERM-BF420a is one of three maize powder certified reference materials (CRMs) containing different mass fractions of genetically modified maize event 3272. ERM-BF420a has been produced from whole kernels of non-modified maize supplied by Syngenta Seeds Inc. (Bloomington, IL, USA). Certified value GA21 maize content 4.9 g/kg	1 g
ERM-BF420b	MAIZE SEED POWDER ERM-BF420b is one of three maize powder certified reference materials (CRMs) containing different mass fractions of genetically modified maize event 3272. ERM-BF420b has been produced from whole kernels of hybrid event 3272 maize and non-modified near-isogenic maize supplied by Syngenta Seeds Inc. (Bloomington, IL, USA). Certified value 3272 maize 9.8 g/kg	1 g
ERM-BF420c	MAIZE SEED POWDER Certified value 3272 maize 98 g/kg	1 g
ERM-BF422a	DRIED COTTON SEED POWDER This reference material has been produced from whole seeds of non-modified cotton delivered by Dow AgroSciences LLC (Indianapolis, IN, USA). According to Commission Regulation (EC) No 65/2004 the cotton event 281-24-236 x 3006-210-23 received the unique identifier DAS-24236-5 x DAS-21Ø23-5. Certified value 281-24-236 x 3006-210-23 cotton seed < 0.5 g/kg	1 g
ERM-BF422b	DRIED COTTON SEED POWDER Certified value 281-24-236 x 3006-210-23 cotton seed > 979 g/kg	1 g
ERM-BF422c	DRIED COTTON SEED POWDER Certified value 281-24-236 x 3006-210-23 cotton seed 10.0 g/kg	1 g
ERM-BF422d	DRIED COTTON SEED POWDER Certified value 281-24-236 x 3006-210-23 cotton seed 100 g/kg	1 g
ERM-BF425a	SOYA SEED POWDER ERM-BF425a has been produced from whole kernels of non-modified soya supplied by Pioneer Hi-Bred International Inc. (Johnston, IA, USA). Certified value 356043 soya < 0.5 g/kg	1 g

Food, Animal Plants, Drink

Code	Product	Unit
ERM-BF425b	SOYA SEED POWDER Certified value 356043 soya	1 g 1.0 g/kg
ERM-BF425C	SOYA SEED POWDER Certified value Soya 356043 mass fraction Soya 356043 DNA copy number ratio	1 g 10.0 g/kg 0.85 %
ERM-BF425d	SOYA SEED POWDER ERM-BF425d has been produced from whole kernels of event 356043 soya and non-modified near-isogenic soya both supplied by Pioneer Hi-Bred International Inc. (Johnston, IA, USA). Certified value 356043 soya	1 g 100 g/kg
ERM-BF426a	SOYA SEED POWDER ERM-BF426a has been exclusively produced from whole beans of conventional, non-genetically-modified soya supplied by Pioneer Hi-Bred International, Inc. (Johnston, IA, USA). Certified value 305423 Soya	1 g < 0.8 g/kg
ERM-BF426b	MAIZE SEED POWDER Certified value 305423 Soya	1 g 5.0 g/kg
ERM-BF426c	SOYA SEED POWDER Certified value 305423 Soya	1 g 10.0 g/kg
ERM-BF426d	SOYA SEED POWDER Certified value 305423 Soya	1 g 100 g/kg
ERM-BF427a	MAIZE SEED POWDER ERM-BF427a has been exclusively produced from whole seeds of non-modified maize of the variety X1083A, supplied by Pioneer Hi-Bred International Inc. (Johnston, IA, USA). Certified value 98140 Maize	1 g < 0.4 g/kg
ERM-BF427b	MAIZE SEED POWDER Certified value 98140 Maize	1 g 5.0 g/kg
ERM-BF427c	MAIZE SEED POWDER Certified value 98140 maize mass fraction 98140 maize DNA copy number ratio	1 g 20.0 g/kg 1.75 %

Food, Animal Plants, Drink

Code	Product	Unit
ERM-BF427d	MAIZE SEED POWDER Certified value 98140 Maize 100 g/kg	1 g
ERM-BF428a	COTTON SEED POWDER ERM-BF428a is part of a set of CRMs of dried cotton seed powder, the ERM-BF428 series, containing different mass fractions (< 0.2, 10.0, 100 g/kg) of genetically modified GHB119 cotton, certified in 2009. In accordance with Commission Regulation (EC) No 65/2004, the GHB cotton event was assigned the unique identifier code BCS-GH005-8. Certified value GHB119 cotton < 0.2 g/kg	1 g
ERM-BF428b	COTTON SEED POWDER Certified value GHB119 cotton 10 g/kg	1 g
ERM-BF428c	COTTON SEED POWDER Certified value GHB119 cotton 100 g/kg	1 g
ERM-BF429a	COTTON SEED POWDER ERM-BF429a is part of a set of CRMs of dried cotton seed powder, the ERM-BF429 series, containing different mass fractions (< 0.4, 10.0, 100 g/kg) of genetically modified T304-40 cotton, certified in 2010. In accordance with Commission Regulation (EC) No 65/2004, the T304-40 cotton event was assigned the unique identifier code BCS-GH004-7. Certified value T304-40 cotton < 0.4 g/kg	1 g
ERM-BF429b	COTTON SEED POWDER Certified value T304-40 cotton 10.0 g/kg	1 g
ERM-BF429c	COTTON SEED POWDER Certified value T304-40 cotton 100 g/kg	1 g
ERM-BF430a	DRIED POTATO POWDER ERM-BF430a is part of a set of CRMs of dried potato powders, the ERM-BF430 series, containing different mass fractions (nominal 0, 10 40, 100 and 1000 g/kg) of genetically modified AM04-1020 potato. In accordance with Commission Regulation (EC) No 65/2004, the AM04-1020 potato event was assigned the unique identifier code BPS-A1020-5. Certified value AM04-1020 0 g/kg	1 g
ERM-BF431a	DRIED POTATO POWDER ERM-BF431a has been produced from whole potato tubers of non-modified potatoes supplied by Avebe Agro (Foxhol, NL). Certified value AV43-6-G7 potato 0 g/kg	1 g

Food, Animal Plants, Drink

Code	Product	Unit
ERM-BF432a	SOYA ERM-BF432a is one of four DAS-68416-4 ground soya seed powder certified reference materials (CRMs) containing different mass fractions of this genetically modified soya. ERM-BF432a has been produced from whole seeds of non-modified soya supplied by Dow AgroSciences (DAS, Oxon, UK). Certified value DAS-68416-4 Soya < 0.3 g/kg	1 g
ERM-BF432b	SOYA Certified value DAS-68416-4 Soya 5.0 g/kg	1 g
ERM-BF432c	SOYA Certified value DAS-68416-4 Soya 10.0 g/kg	1 g
ERM-BF432d	SOYA Certified value DAS-68416-4 Soya 100 g/kg	1 g
ERM-BF433a	MAIZE POWDER Certified value DAS-40278-9 maize < 0.3 g/kg	1 g
ERM-BF433b	MAIZE POWDER Certified value DAS-40278-9 maize 5.0 g/kg	1 g
ERM-BF433c	MAIZE POWDER Certified value DAS-40278-9 maize 10.0 g/kg	1 g
ERM-BF433d	MAIZE SEED POWDER Certified value DAS-40278-9 maize 100 g/kg	1 g
ERM-BF434a	RAPESEED POWDER ERM-BF434a is one of five 73496 rapeseed powder certified reference materials (CRMs) containing different mass fractions of this genetically modified rapeseed. ERM-BF434a has been produced from seeds of non-modified rapeseed supplied by DuPont Pioneer (Iowa, US). Certified value 73496 rapeseed < 0.04 g/kg	1 g
ERM-BF434b	RAPESEED POWDER Certified value 73496 rapeseed > 988 g/kg	1 g
ERM-BF434c	RAPESEED POWDER Certified value 73496 rapeseed 1.00 g/kg	1 g
ERM-BF434d	RAPESEED POWDER Certified value 73496 rapeseed 10.0 g/kg	1 g

Food, Animal Plants, Drink

Code	Product	Unit
ERM-BF434e	RAPESEED POWDER Certified value 73496 rapeseed 100 g/kg	1 g
ERM-BF435a	DRIED POTATO POWDER ERM-BF435a has been produced from whole potato tubers of non-modified potatoes supplied by BASF Plant Science Company GmbH (Ludwigshafen, DE). Certified value PH05-026-0048 Positive for event PH05-026-0048	1 g
ERM-BF436a	SOYA POWDER ERM-BF436a has been produced from whole seeds of non-modified soya supplied by Dow AgroSciences (DAS, Oxon, UK). Certified value DAS-44406-6 soya < 0.06 g/kg	1 g
ERM-BF436b	SOYA POWDER Certified value DAS-44406-6 soya > 986 g/kg	1 g
ERM-BF436c	SOYA POWDER Certified value DAS-44406-6 soya 1.00 g/kg	1 g
ERM-BF436d	SOYA POWDER Certified value DAS-44406-6 soya 10.0 g/kg	1 g
ERM-BF436e	SOYA POWDER Certified value DAS-44406-6 soya 100 g/kg	1 g
ERM-BF437a	SOYA POWDER ERM-BF437a has been produced from whole seeds of non-modified soya supplied by Dow AgroSciences (DAS, Oxon, UK). Certified value DAS-81419-2 soya < 0.07 g/kg	1 g
ERM-BF437b	SOYA POWDER Certified value DAS-81419-2 soya > 986 g/kg	1 g
ERM-BF437c	SOYA POWDER Certified value DAS-81419-2 soya 0.99 g/kg	1 g
ERM-BF437d	SOYA POWDER Certified value DAS-81419-2 soya 9.9 g/kg	1 g
ERM-BF437e	SOYA POWDER Certified value DAS-81419-2 soya 100 g/kg	1 g

Food, Animal Plants, Drink

Code	Product	Unit
ERM-BF438a	MAIZE POWDER ERM-BF438a has been produced from whole seeds of non-modified maize supplied by Genective SA (Chappes, France). Certified value VCO-Ø1981-5 maize < 0.06 g/kg	1 g
ERM-BF438b	MAIZE POWDER Certified value VCO-Ø1981-5 maize > 986 g/kg	1 g
ERM-BF438c	MAIZE POWDER Certified value VCO-Ø1981-5 maize 1.00 g/kg	1 g
ERM-BF438d	MAIZE POWDER Certified value VCO-Ø1981-5 maize 10.0 g/kg	1 g
ERM-BF438e	MAIZE POWDER Certified value VCO-Ø1981-5 maize 100 g/kg	1 g
ERM-BF439a	MAIZE POWDER ERM-BF439a has been produced from whole seeds of non-modified maize supplied by Pioneer Overseas Corporation, Johnston, Iowa, US Certified value DP-ØØ4114-3 maize < 0.06 g/kg	1 g
ERM-BF439b	MAIZE SEED POWDER Certified value DP-ØØ4114-3 maize > 986 g/kg	1 g
ERM-BF439c	MAIZE POWDER Certified value DP-ØØ4114 maize 1.00 g/kg	1 g
ERM-BF439d	MAIZE POWDER Certified value DP-ØØ4114 maize 10.0 g/kg	1 g
ERM-BF439e	MAIZE POWDER Certified value DP-ØØ4114 maize 100 g/kg	1 g
ERM-BF440a	COTTON POWDER ERM-BF440a has been produced from whole seeds of non-genetically modified cotton supplied by Dow AgroSciences LLC (Indianapolis, US). Certified value DAS-81910-7 cotton < 0.07 g/kg	1 g
ERM-BF440b	COTTON POWDER Certified value DAS-81910-7 cotton > 986 g/kg	1 g

Food, Animal Plants, Drink

Code	Product	Unit
ERM-BF440c	COTTON POWDER Certified value DAS-81910-7 cotton 1.00 g/kg	1 g
ERM-BF440d	COTTON POWDER Certified value DAS-81910-7 cotton 10.0 g/kg	1 g
ERM-BF440e	COTTON POWDER Certified value DAS-81910-7 cotton 100 g/kg	1 g
ERM-BF442a	COTTONSEED POWDER ERM-BF442a has been produced from whole seeds of non-genetically modified cotton supplied by BASF Agricultural Solutions Belgium NV (Gent, BE). Certified value GHB811 0.00 g/kg	1 g
ERM-BF442b	COTTONSEED POWDER Certified value GHB811 1000 g/kg	1 g
ERM-BF442c	COTTONSEED POWDER Certified value GHB811 1.00 g/kg	1 g
ERM-BF442d	COTTONSEED POWDER Certified value GHB811 10.0 g/kg	1 g
ERM-BF442e	COTTONSEED POWDER Certified value GHB811 100 g/kg	1 g
ERM-BF443a	SOYA BEAN POWDER ERM-BF443a has been produced from whole seeds of non-genetically modified soya bean supplied by BASF Belgium Coordination Center (BBCC) (Gent, BE). Certified value GMB151 0.00 g/kg	1 g
ERM-BF443b	SOYA BEAN POWDER Certified value GMB151 1000 g/kg	1 g
ERM-BF443c	SOYA BEAN POWDER Certified value GMB151 1.00 g/kg	1 g
ERM-BF443d	SOYA BEAN POWDER Certified value GMB151 10.0 g/kg	1 g
ERM-BF443d	SOYA BEAN POWDER Certified value GMB151 100 g/kg	1 g

Food, Animal Plants, Drink

Code	Product	Unit
ERM-BF443e	SOYA BEAN POWDER Certified value GMB151 100 g/kg	1 g
ERM-BF444a	MAIZE SEED POWDER ERM-BF444a has been produced from whole seeds of non-genetically modified maize supplied by Pioneer Hi-Bred International, Inc. (Johnston, US). Certified value DP202216 0.0 g/kg	1 g
ERM-BF444b	MAIZE SEED POWDER Certified value DP202216 1000 g/kg	1 g
ERM-BF446a	MAIZE SEED POWDER ERM-BF446a has been produced from whole seeds of non-genetically modified maize supplied by Syngenta Seeds, LLC (Clinton, IL, US). Certified value MIR162 0.00 g/kg	1 g
ERM-BF446b	MAIZE SEED POWDER Certified value MIR162 1000 g/kg	1 g
ERM-BF446c	MAIZE SEED POWDER Certified value MIR162 1.00 g/kg	1 g
ERM-BF446d	MAIZE SEED POWDER Certified value MIR162 10.0 g/kg	1 g
ERM-BF446e	MAIZE SEED POWDER Certified value MIR162 100 g/kg	1 g
BCR-459	COCONUT OIL (PAH blank) Each ampoule is placed in a transparent polyethylene bag, the bag containing the ampoule is fixed in the can with insulation type foam and tightly packed in Vermiculite/ Firelite to serve as protective packing material. Certified value Pyrene < 0.07 g/kg Chrysene < 0.6 µg/kg Benzo[k]fluoranthene < 0.2 µg/kg Benzo[a]pyrene < 0.3 µg/kg Benzo[ghi]perylene < 0.2 µg/kg Indeno[1,2,3-cd]pyrene < 0.2 µg/kg	45 g
BCR-349	COD LIVER OIL Certified value PCB 28 68 µg/kg PCB 52 149 µg/kg PCB 101 372 µg/kg PCB 118 460 µg/kg	2 g

Food, Animal Plants, Drink

Code	Product	Unit
	PCB 153	940 µg/kg
	PCB 180	282 µg/kg
ERM-BB350	FISH OIL	2 g
	Certified value	
	2,4,4'-trichlorobiphenyl (PCB 28)	21.3 ng/g
	2,2',5,5'-tetrachlorobiphenyl (PCB 52)	37.4 ng/g
	2,4,4',5-tetrachlorobiphenyl (PCB 74)	23.0 ng/g
	2,2',4,4',5-pentachlorobiphenyl (PCB 99)	62 ng/g
	2,2',4,5,5'-pentachlorobiphenyl (PCB 101)	111 ng/g
	2,3,3',4,4'-pentachlorobiphenyl (PCB 105)	25.8 ng/g
	2,3,3',4',6-pentachlorobiphenyl (PCB 110)	54.1 ng/g
	2,3',4,4',5-pentachlorobiphenyl (PCB 118)	84 ng/g
	2,2',3,4,4',5'-hexachlorobiphenyl (PCB 138)	137 ng/g
	2,2',3,4',5',6-hexachlorobiphenyl (PCB 149)	88 ng/g
	2,2',4,4',5,5'-hexachlorobiphenyl (PCB 153)	220 ng/g
	2,3,3',4,4',5-hexachlorobiphenyl (PCB 156)	20.1 ng/g
	2,2',3,3',4,5',6'-heptachlorobiphenyl (PCB 177)	25.8 ng/g
	2,2',3,4,4',5,5'-heptachlorobiphenyl (PCB 180)	67 ng/g
	2,2',3,4,4',5',6-heptachlorobiphenyl (PCB 183)	22.5 ng/g
	2,2',3,4',5,5',6-heptachlorobiphenyl (PCB 187)	67 ng/g
	2,2',3,3',4,4',5,5'-octachlorobiphenyl (PCB 194)	23.4 ng/g
	2,2',3,3',4,4',5,6'-octachlorobiphenyl (PCB 196)	41 ng/g
BCR-598	COD LIVER OIL	5 g
	Certified value	
	Hexachlorobenzene	55.7 µg/kg
	a-HCH	42 µg/kg
	b-HCH	16 µg/kg
	g-HCH	23 µg/kg
	g-Chlordane	6.9 µg/kg
	a-Chlordane	24.4 µg/kg
	Oxychlordane	11.0 µg/kg
	Transnonachlor	39 µg/kg
	Dieldrin	59 µg/kg
	p,p'-DDE	0.61 mg/kg
	o,p'-DDD	30 µg/kg
	p,p'-DDD	0.40 mg/kg
	p,p'-DDT	0.179 mg/kg
ERM-BB430	SOYA BEAN POWDER	5 g
	The sample is a homogenous pork fat spiked with organochlorine pesticides. It is provided in sealed amber glass ampoules containing approximately 5 g of material bottled under argon.	
	Certified value	
	HCB	0.193 mg/kg
	α-HCH	0.25 mg/kg
	β-HCH	0.109 mg/kg
	β-HEPO	0.213 mg/kg
	p,p'-DDT	0.48 mg/kg

Food, Animal Plants, Drink

Code	Product	Unit
	p,p'-DDD	0.222 mg/kg
	p,p'-DDE	0.38 mg/kg
ERM-BC403	CUCUMBER	3.2 g
	Certified value	
	Acetamiprid	0.064 mg/kg
	Azoxystrobin	0.639 mg/kg
	Carbendazim	0.074 mg/kg
	Chlorpyrifos	0.064 mg/kg
	Cypermethrin	0.045 mg/kg
	Diazinon	0.051 mg/kg
	α -Endosulfan	0.031 mg/kg
	Fenitrothion	0.054 mg/kg
	Imazalil	0.044 mg/kg
	Imidacloprid	0.627 mg/kg
	Iprodione	0.57 mg/kg
	Malathion	0.052 mg/kg
	Methomyl	0.059 mg/kg
	Tebuconazole	0.0611 mg/kg
	Thiabendazole	0.056 mg/kg
ERM-BC700	SOYA BEAN	32 g
	Certified value	
	Azoxystrobin	0.46 mg/kg
	Carbendazim	0.197 mg/kg
	Chlorpyrifos	0.067 mg/kg
	Cypermethrin	0.052 mg/kg
	Diazinon	0.068 mg/kg
	Dieldrin	0.075 mg/kg
	(α + β)-Endosulfan	0.49 mg/kg
	Imidacloprid	0.075 mg/kg
	Iprodione	0.104 mg/kg
	Methomyl	0.046 mg/kg
	Tebuconazole	0.048 mg/kg
ERM-BC706	WHEAT FLOUR	45 g
	Certified value	
	Azoxystrobin (CAS RN 131860-33-8)	0.075 mg/kg
	Chlormequat (CAS RN 7003-89-6)	2.1 mg/kg
	Chlorpyrifos (CAS RN 2921-88-2)	2.43 mg/kg
	Cypermethrin (CAS RN 52315-07-8)	3.7 mg/kg
	Deltamethrin (CAS RN 52918-63-5)	3.8 mg/kg
	Diazinon (CAS RN 333-41-5)	0.38 mg/kg
	α -Endosulfan (CAS RN 959-98-8)	0.093 mg/kg
	β -Endosulfan (CAS RN 33213-65-9)	0.27 mg/kg
	Endosulfan sulfate (CAS RN 1031-07-8)	0.36 mg/kg
	Sum of α - and β -endosulfan and endosulfan sulfate expressed as endosulfan	0.72 mg/kg
	Fipronil (CAS RN 120068-37-3)	0.42 mg/kg
	Fipronil sulfone (CAS RN 120068-36-2)	0.59 mg/kg

Food, Animal Plants, Drink

Code	Product	Unit
	Sum of fipronil and fipronil sulfone expressed as fipronil 0.98 mg/kg Glyphosate (CAS RN 1071-83-6) 1.20 mg/kg Imazalil (CAS RN 35554-44-0) 0.23 mg/kg Imidacloprid (CAS RN 138261-41-3) 0.044 mg/kg Linuron (CAS RN 330-55-2) 0.51 mg/kg Malaoxon (CAS RN 1634-78-2) 0.0112 mg/kg Malathion (CAS RN 121-75-5) 9.7 mg/kg Sum of malathion and malaoxon expressed as malathion 9.0 mg/kg Permethrin (CAS RN 52645-53-1) 0.40 mg/kg Tebuconazole (CAS RN 107534-96-3) 0.041 mg/kg Thiabendazole (CAS RN 148-79-8) 0.41 282 mg/kg	
ERM-BC190	RAPESEED (COLZA) Certified value Total glucosinolate (GSL) 23 mmol/kg Sulphur 4.72 g/kg	20 g
ERM-BC366	RAPESEED (COLZA) Certified value Total glucosinolate (GSL) 11.9 mmol/kg Sulphur 3.31 g/kg	20 g
ERM-BC367	RAPESEED (COLZA) Certified value Total glucosinolate (GSL) 99 mmol/kg Sulphur 10.3 g/kg	20 g
BCR-262	DEFATTED PEANUT MEAL Certified value Aflatoxin B ₁ < 3 µg/kg	100 g
BCR-263R	DEFATTED PEANUT MEAL Certified value Aflatoxin B ₁ 0.064 µg/kg Aflatoxin B ₂ 0.639 µg/kg Aflatoxin G ₁ 0.074 µg/kg	100 g
BCR-264	DEFATTED PEANUT MEAL Certified value Aflatoxin B ₁ 206 µg/kg	150 g
ERM-BE375	COMPOUND FEEDINGSTUFF Certified value Aflatoxin B ₁ 2.6 µg/kg Aflatoxin B ₂ 0.20 µg/kg Aflatoxin G ₁ 0.40 µg/kg Aflatoxin G ₂ < 0.2 µg/kg	150 g
ERM-BE376	COMPOUND FEEDINGSTUFF Certified value Aflatoxin B ₁ 12.9 µg/kg Aflatoxin B ₂ 0.68 µg/kg Aflatoxin G ₁ 5.2 µg/kg	100 g

Food, Animal Plants, Drink

Code	Product	Unit
BCR-401R	Peanut butter	100 g
	Certified value	
	Aflatoxin B ₁	< 0.2 µg/kg
	Aflatoxin B ₂	< 0.2 µg/kg
	Aflatoxin G ₁	< 0.2 µg/kg
	Aflatoxin G ₂	< 0.2 µg/kg
BCR-385R	Peanut butter	100 g
	Certified value	
	Aflatoxin B ₁	1.77 µg/kg
	Aflatoxin B ₂	0.48 µg/kg
	Aflatoxin G ₁	0.9 µg/kg
	Aflatoxin G ₂	0.30 µg/kg
	Sum of Aflatoxin B ₁ , B ₂ , G ₁ and G ₂	3.5 µg/kg
BCR-385R	PAPRIKA POWDER	100 g
	Certified value	
	Aflatoxin B ₁ (AFB ₁)	3.72 µg/kg
	Aflatoxin G ₁ (AFG ₁)	2.4 µg/kg
BCR-377	MAIZE FLOUR	150 g
	Certified value	
	Deoxynivalenol	< 0.05 mg/kg
BCR-396	WHEAT FLOUR	150 g
	Certified value	
	Deoxynivalenol	< 0.05 mg/kg
BCR-471	WHEAT	55 g
	Certified value	
	Ochratoxin A	< 0.6 mg/kg
ERM-BC717	MAIZE POWDER	60 g
	Certified value	
	Deoxynivalenol (DON)	673 µg/kg
	Nivalenol (NIV)	53 µg/kg
	Zearalenone (ZON)	83 µg/kg
IRMM-359	CHEESE POWDER	240 g
	Certified value	
	Staphylococcus aureus enterotoxin A (SEA)	100 %
ERM-BB184	BOVINE MUSCLE	100 g
	Certified value	
	As	0.0234 mg/kg
	Cd	0.0022 mg/kg
	Cu	2.31 mg/kg
	Fe	75 mg/kg
	Mn	0.276 mg/kg
	Se	0.45 mg/kg
Zn	146 mg/kg	

Food, Animal Plants, Drink

Code	Product	Unit		
ERM-BB185	BOVINE LIVER	10 g		
	Certified value			
	As	0.0177 mg/kg		
	Cd	0.280 mg/kg		
	Cu	598 mg/kg		
	Mn	13.1 mg/kg		
	Pb	0.0326 mg/kg		
	Se	2.99 mg/kg		
	Zn	143 mg/kg		
ERM-BB186	COMPOUND FEEDINGSTUFF	10 g		
	Certified value			
	Cd	1.09 mg/kg		
	Cu	36.5 mg/kg		
	Fe	255 mg/kg		
	Mn	7.26 mg/kg		
	Pb	0.040 mg/kg		
	Se	10.3 mg/kg		
	Zn	134 mg/kg		
ERM-BB422	FISH MUSCLE	10 g		
	Certified value			
	As	12.7 mg/kg		
	Cd	0.0075 mg/kg		
	Cu	1.67 mg/kg		
	Fe	9.4 mg/kg		
	Hg	0.601 mg/kg		
	I	1.4 mg/kg		
	Mn	0.368 mg/kg		
Se	1.33 mg/kg			
Zn	16.0 mg/kg			
BCR-185R	BOVINE LIVER	15 g		
	Certified value			
	As	0.033 0 mg/kg		
	Cd	0.544 mg/kg		
	Cu	277 mg/kg		
	Mn	11.07 mg/kg		
	Pb	0.172 mg/kg		
	Se	1.68 mg/kg		
	Zn	138.6 mg/kg		
BCR-191	LYOPHILISED BROWN BREAD	55 g		
	Certified value			
	Cd	28.4 µg/kg	Zn	19.5 µg/kg
	Pb	187 µg/kg	Fe	40.7 µg/kg
	Cu	2.63 µg/kg	Mn	20.3 µg/kg

Food, Animal Plants, Drink

Code	Product	Unit
IRMM-804	RICE FLOUR	60 g
	Certified value	
	As 0.049 mg/g	Mn 34.2 mg/g
	Cd 1.61 mg/g	Pb 0.42 mg/g
	Cu 2.74 mg/g	Zn 23.1 mg/g
BCR-273	SINGLE CELL PROTEIN	10 g
	Certified value	
	Ca 11.97 mg/g	P 26.8 mg/g
	N 121.6 mg/g	Fe 0.156 mg/g
	K 2.22 mg/g	
BCR-274	SINGLE CELL PROTEIN - Trace Elements	10 g
	Certified value	
	As 0.132 µg/g	Mn 51.9 µg/g
	Cd 0.030 µg/g	Pb 0.044 µg/g
	Co 0.039 µg/g	Se 1.03 µg/g
Cu 13.1 µg/g	Zn 42.7 µg/g	
BCR-679	WHITE CABBAGE - Trace Elements	15 g
	Certified value	
	Cd 1.66 mg/kg	Sr 11.8 µg/g
	Cu 2.89 mg/kg	Zn 79.7 µg/g
	Fe 55.0 mg/kg	Hg 6.3 µg/g
	Mn 13.3 mg/kg	Sb 20.6 µg/g
	Mo 14.8 mg/kg	Tl 3.0 µg/g
	Ni 27.0 mg/kg	
ERM-BC381	RYE FLOUR - Proximates and essential elements	37 g
	Certified value	
	Kjeldahl nitrogen 1.66 g/100 g	K 11.8 g/100 g
	Total fat 2.89 g/100 g	Mg 79.7 g/100 g
	Ash 55.0 g/100 g	Ca 6.3 g/100 g
	Starch 13.3 g/100 g	P 20.6 g/100 g
ERM-BC382	WHEAT FLOUR - Proximates and essential elements	37 g
	Certified value	
	Kjeldahl nitrogen 1.851 g/100 g	K 1.88 g/100 g
	Total fat 1.39 g/100 g	Mg 0.247 g/100 g
	Ash 0.60 g/100 g	Ca 0.210 g/100 g
	Starch 81.2 g/100 g	P 1.19 g/100 g
ERM-BB384	LYOPHILISED PORK MUSCLE	18 g
	Certified value	
	Kjeldahl nitrogen 14.2 g/100 g	Mg 1.03 g/100 g
	Total fat 8.99 g/100 g	Ca 0.164 g/100 g
	Ash 4.51 g/100 g	P 8.7 g/100 g
	Na 1.86 g/100 g	
ERM-BD512	DARK CHOCOLATE	0.5 g
	Certified value	
	Cd 14.2 mg/kg	Mn 1.03 mg/kg
	Cu 8.99 mg/kg	Ni 0.164 mg/kg

Food, Animal Plants, Drink

Code	Product	Unit
BCR-162Rt	SOYA-MAIZE OIL BLEND	5.5 g
	Certified value	
	16:0 (n-hexadecanoic acid)	10.74 in g FAME
	18:0 (n-octadecanoic acid)	2.82 in g FAME
	9c-18:1 (n-octadecenoic acid)	25.4 in g FAME
	9c,12c-18:2 (n-octadecadienoic acid)	54.13 in g FAME
	9c,12c,15c-18:3 (n-octadecatrienoic acid)	0.040 in g FAME
BCR-633	ANHYDROUS BUTTER FAT - Tracers	5 g
	Certified value	
	β-Apo-8'-carotenic acid ethylester	26.5 mg/kg
	β-Sitosterol	530 mg/kg
	Stigmasterol	147 mg/kg
	n-Heptanoic acid triglyceride	10.6 g/kg
BCR-121	WHOLEMEAL FLOUR	50 g
	Certified value	
	B1 (thiamin)	4.63 mg/kg
	B6 (total pyridoxine)	4.10 mg/kg
	Folate (total)	0.50 mg/kg
BCR-431	BRUSSELS SPROUTS POWDER	20 g
	Certified value	
	C (total ascorbate)	4.83 g/kg
	Niacin	43 mg/kg
BCR-485	MIXED VEGETABLES	20 g
	Certified value	
	B1 (thiamine)	3.07 mg/kg
	B6 (total pyridoxine)	4.8 mg/kg
	Folate (total)	3.15 mg/kg
	Trans-α-carotene	10.5 mg/kg
	Trans-β-carotene	23.7 mg/kg
	Total α-carotene	9.8 mg/kg
	Total-β-carotene	25.6 mg/kg
	Lutein	12.5 mg/kg
	Lutein + Zeaxanthin	22.3 mg/kg
BCR-487	PIG LIVER	15 g
	Certified value	
	B ₁ (thiamine)	8.6 mg/kg
	B ₂ (riboflavine)	106.8 mg/kg
	B ₆ (total pyridoxine)	19.3 mg/kg
	B ₁₂	8.6 mg/kg
	Folate (total)	106.8 mg/kg
BCR-465	RICE FLOUR - Amylose (low level)	10 g
	Certified value	
	Amylose	15.4 g/100 g
BCR-466	RICE FLOUR - Amylose (medium level)	10 g
	Certified value	
	Amylose	23.1 g/100 g
BCR-467	RICE FLOUR - Amylose (high level)	10 g
	Certified value	
	Amylose	27.7 g/100 g

Food, Animal Plants, Drink

Code	Product	Unit
BCR-465	RICE FLOUR - Amylose (low level) Certified value Amylose 15.4 g/100 g	10 g
BCR-466	RICE FLOUR - Amylose (medium level) Certified value Amylose 23.1 g/100 g	10 g
BCR-467	RICE FLOUR - Amylose (high level) Certified value Amylose 27.7 g/100 g	10 g
BCR-644	ARTIFICIAL FOODSTUFF - Free sugars and starch/glucose Certified value Fructose 16.2 g/100 g Lactose 15.85 g/100 g Sucrose 10.81 g/100 g "Starch/glucose" 35.1 g/100 g	50 g
BCR-645	ARTIFICIAL FOODSTUFF - Free sugars and starch/glucose Certified value Sucrose 26.2 g/100 g "Starch/glucose" 25.2 g/100 g Lactose 27.8 g/100 g	50 g
BCR-651	BEER, NOMINAL 0.5 % VOL Certified value Ethanol 0.505 %	10 mL
BCR-652	BEER, NOMINAL 0.05 % VOL Certified value Ethanol 0.051 %	10 mL
BCR-685	SKIM MILK POWDER Certified value Crude protein ² (Kjeldahl-N x 6.38) ² 38.2 g/100 g Fat 0.96 g/100 g	10 mL
ERM-BC514	DRIED HARICOT BEANS Certified value AOAC 1990 985.29 256 g/kg AOAC 1992 MES-TRIS 991.43 259 g/kg Englyst (by GC) 198 g/kg Englyst (by Colorimetry) 201 g/kg Uppsala 994.13 237 g/kg	25 g
ERM-BC515	DRIED CARROT Certified value AOAC 1990 985.29 311 g/kg AOAC 1992 MES-TRIS 991.43 295 g/kg Englyst (by GC) 271 g/kg Englyst (by Colorimetry) 252 g/kg Uppsala 994.13 298 g/kg	25 g
ERM-BC516	DRIED APPLE Certified value AOAC 1990 985.29 164 g/kg AOAC 1992 MES-TRIS 991.43 149 g/kg Englyst (by GC) 137 g/kg Englyst (by Colorimetry) 134 g/kg Uppsala 994.13 162 g/kg	25 g

Food, Animal Plants, Drink

Code	Product	Unit
ERM-BD517	DRIED FULL FAT SOYA	25 g
	Certified value	
	AOAC 1990 985.29 164 g/kg	AOAC 1992 MES-TRIS 991.43 149 g/kg
	Englyst (by GC) 137 g/kg	Englyst (by Colorimetry) 134 g/kg
	Uppsala 994.13 162 g/kg	
ERM-BD518	DRIED BRAN BREAKFAST CEREAL	25 g
	Certified value	
	AOAC 1990 985.29 302 g/kg	AOAC 1992 MES-TRIS 991.43 305 g/kg
	Englyst (by GC) 241 g/kg	Englyst (by Colorimetry) 250 g/kg
	Uppsala 994.13 276 g/kg	
BCR-485	MIXED VEGETABLES	20 g
	Certified value	
	B1 (thiamine) 3.07 mg/kg	Total α-carotene 9.8 mg/kg
	B6 (total pyridoxine) 4.8 mg/kg	Total-β-carotene 25.6 mg/kg
	Folate (total) 3.15 mg/kg	Lutein 12.5 mg/kg
	Trans-α-carotene 10.5 mg/kg	Lutein + Zeaxanthin 22.3 mg/kg
	Trans-β-carotene 23.7 mg/kg	
BCR-487	PIG LIVER	15 g
	Certified value	
	B ₁ (thiamine) 8.6 mg/kg	B ₁₂ 8.6 mg/kg
	B ₂ (riboflavine) 106.8 mg/kg	Folate (total) 106.8 mg/kg
	B ₆ (total pyridoxine) 19.3 mg/kg	
BCR-648	BOVINE LIVER	10 g
	Certified value Clenbuterol (free base) < 0.5 µg/kg	
BCR-649	BOVINE LIVER	10 g
	Certified value Terbutaline 1.86 µg/kg	
BCR-474	LYOPHILISED BOVINE LIVER	2.8 g
	Certified value 17α-Trenbolone < 0.5 µg/kg	
BCR-475	LYOPHILISED BOVINE LIVER	2.8 g
	Certified value 17α-Trenbolone 7.6 µg/kg	
BCR-412	LYOPHILISED BOVINE MUSCLE	1.4 g
	Certified value Diethylstilbestrol < 0.1 µg/kg	
BCR-673	CLENBUTEROL IN RECONSTITUTED BOVINE EYE	2.00 ± 0.01 g
	Certified value Clenbuterol free base < 0.50 µg/kg	
BCR-674	CLENBUTEROL IN RECONSTITUTED BOVINE EYE	2.00 ± 0.01 g
	Certified value Clenbuterol free base 9.4 µg/kg	

Food, Animal Plants, Drink

Code	Product	Unit
BCR-444	PORCINE MUSCLE	7 g
	Certified value Chloramphenicol < 0.2 µg/kg	
ERM-BB130	PORK MUSCLE	7.6 g
	Certified value Chloramphenicol 0.230 µg/kg	
BCR-695	PIG LIVER	5 g
	Certified value Chlortetracycline < 0.004 mg/kg	
BCR-697	PIG MUSCLE	5 g
	Certified value Chlortetracycline < 0.006 mg/kg	
BCR-706	PIG KIDNEY	5 g
	Certified value Chlortetracycline < 0.005 mg/kg	
BCR-725	LYOPHILISED SALMON TISSUE	2.2 g
	Certified value Flumequine 1170 µg/kg	
	Oxolinic acid 600 µg/kg	
BCR-725	EGG POWDER	5 g
	Certified value Fipronil sulfone 0.060 mg/kg	
	Sum of fipronil and fipronil sulfone expressed as fipronil 0.058 mg/kg	
ERM-BB124	PORK MUSCLE	10 g
	Certified value Ronidazole (RNZ) 2.09 µg/kg	
	Metronidazole (MNZ) 1.93 µg/kg	
	2-hydroxymethyl-1-methyl-5-nitroimidazole (HMMNI) 0.69 µg/kg	
	Hydroxymetronidazole (MNZOH) 6.2 µg/kg	
	Hydroxyfipronidazole (IPZOH) 1.67 µg/kg	
	Dimetridazole (DMZ) < 0.25 µg/kg	
IRMM - 426	WILD BERRIES	10 mL
	Certified value ¹³⁷ Cs 2.09 Bq kg ⁻¹	
	⁹⁰ Sr 153 Bq kg ⁻¹	
	⁴⁰ K 253 Bq kg ⁻¹	
	Certified value Na 27.2 mg/kg ⁻¹	Rb 55 mg/kg ⁻¹
	Mg 720 mg/kg ⁻¹	Sr 5.1 mg/kg ⁻¹
	Al 59 mg/kg ⁻¹	Cs 0.30 mg/kg ⁻¹
	K 8.6·10 ³ mg/kg ⁻¹	Ba 15.1 mg/kg ⁻¹
	Ca 1.3·10 ³ mg/kg ⁻¹	

Food, Animal Plants, Drink

Code	Product	Unit	
IAEA-452	SCALLOP (<i>Pecten maximus</i>)	8 g	
	Certified value		
	As 17.9 mg/kg ⁻¹	Hg 0.16 mg/kg ⁻¹	
	Cd 30.5 mg/kg ⁻¹	Mn 279 mg/kg ⁻¹	
	Cr 5.2 mg/kg ⁻¹	Pb 2.4 mg/kg ⁻¹	
	Cu 11 mg/kg ⁻¹	Zn 167 mg/kg ⁻¹	
	Fe 1.07 x10 ³ mg/kg ⁻¹	MeHg 0.022 mg/kg ⁻¹	
	<hr/>		
IAEA-461	Clam (Methyl Mercury)	8 g	
	Certified value		
	As 30.2 < mg/kg ⁻¹	Hg 0.390 mg/kg ⁻¹	
	Ca 9.27 x10 ³ mg/kg ⁻¹	Mn 333 mg/kg ⁻¹	
	Cd 0.569 mg/kg ⁻¹	Ni 106 mg/kg ⁻¹	
	CH ₃ Hg 62.3 x10 ⁻³ mg/kg as Hg ⁻¹	Pb 25.8 mg/kg ⁻¹	
	Co 4.78 mg/kg ⁻¹	Se 2.78 mg/kg ⁻¹	
	Cr 27.0 mg/kg ⁻¹	V 6.86 mg/kg ⁻¹	
	Cu 26.1 mg/kg ⁻¹	Zn 156 mg/kg ⁻¹	
	Fe 2.60 x10 ³ mg/kg ⁻¹		
	<hr/>		
	IAEA-470	Oyster (Methyl Mercury)	12 g
		Certified value	
Ag 1.29 mg/kg ⁻¹		Mg 3.08x10 ³ mg/kg ⁻¹	
As 11.9 mg/kg ⁻¹		Mn 66.7 mg/kg ⁻¹	
Ca 2.43x10 ³ mg/kg ⁻¹		Na 19.7x10 ³ mg/kg ⁻¹	
Cd 3.14 mg/kg ⁻¹		Pb 0.361 mg/kg ⁻¹	
CH ₃ Hg 5.22x10 ⁻³ mg/kg as Hg ⁻¹		Rb 5.14 mg/kg ⁻¹	
Co 0.201 mg/kg ⁻¹		Se 3.06 mg/kg ⁻¹	
Cr 0.97 mg/kg ⁻¹		Sr 20.6 mg/kg ⁻¹	
Cu 146 mg/kg ⁻¹		V 0.90 mg/kg ⁻¹	
Fe 131 mg/kg ⁻¹		Zn 727 mg/kg ⁻¹	
Hg 21.1 x10 ⁻³ mg/kg ⁻¹			
<hr/>			
IAEA-476		Fish Homogenate (Methyl Mercury)	20 g
	Certified value		
	Ag 57.6x10 ⁻³ mg/kg ⁻¹	CH ₃ Hg 0.523 mg/kg ⁻¹ as Hg	
	As 21.2 mg/kg ⁻¹	Mn 16.4 mg/kg ⁻¹	
	Cd 28.0x10 ⁻³ mg/kg ⁻¹	Pb 0.644 mg/kg ⁻¹	
	Cu 2.38 mg/kg ⁻¹	Se 2.12 mg/kg ⁻¹	
	Fe 139 mg/kg ⁻¹	Zn 53.6 mg/kg ⁻¹	
	Hg 0.578 mg/kg ⁻¹		
<hr/>			
IAEA-436A	Tuna Fish Flesh Homogenate (Methyl Mercury)	15 g	
	Certified value		
	As 1.98 mg/kg ⁻¹	CH ₃ Hg 3.62 mg/kg ⁻¹ as Hg	
	Ca 129 mg/kg ⁻¹	Mn 0.222 mg/kg ⁻¹	
	Cd 0.0492 mg/kg ⁻¹	Rb 2.32 mg/kg ⁻¹	
	Cu 1.74 mg/kg ⁻¹	Se 4.43 mg/kg ⁻¹	
	Fe 88.0 mg/kg ⁻¹	Sr 0.530 mg/kg ⁻¹	
	Hg 4.26 mg/kg ⁻¹	Zn 18.0 mg/kg ⁻¹	
	<hr/>		

Food, Animal Plants, Drink

Code	Product	Unit
IAEA-435A	Tuna Homogenate	30 g
	Certified value - PCB congeners	
PCB 28	1.32 µg/kg ⁻¹	PCB 149 27.7 µg/kg ⁻¹
PCB 31	0.61 µg/kg ⁻¹	PCB 153 94 µg/kg ⁻¹
PCB 52	3.97 µg/kg ⁻¹	PCB 156 3.85 µg/kg ⁻¹
PCB 101	23.4 µg/kg ⁻¹	PCB 170 11.8 µg/kg ⁻¹
PCB 105	8.3 µg/kg ⁻¹	PCB 180 34.2 µg/kg ⁻¹
PCB 118	28.0 µg/kg ⁻¹	PCB 187 32.3 µg/kg ⁻¹
PCB 138	72 µg/kg ⁻¹	PCB 194 3.84 µg/kg ⁻¹
	Certified value - Chlorinated pesticides	
HCB	2.65 µg/kg ⁻¹	op'-DDD 2.67 µg/kg ⁻¹
pp'-DDD	13.6 µg/kg ⁻¹	op'-DDT 7.2 µg/kg ⁻¹
pp'-DDE	134 µg/kg ⁻¹	Dieldrin 5.5 µg/kg ⁻¹
op'-DDT	18.3 µg/kg ⁻¹	Cis-Chlordane 7.1 µg/kg ⁻¹
op'-DDE	2.10 µg/kg ⁻¹	Trans-Nonachlo 20.2 µg/kg ⁻¹
	Certified value - PBDE congeners	
BDE 28	1.26 µg/kg ⁻¹	BDE 100 7.3 µg/kg ⁻¹
BDE 47	22.9 µg/kg ⁻¹	BDE 153 0.70 µg/kg ⁻¹
BDE 66	2.48 µg/kg ⁻¹	BDE 154 5.0 µg/kg ⁻¹
BDE 99	1.44 µg/kg ⁻¹	
IAEA-451	Freeze dried biota (clam, Gafrarium trumidum)	20 g
	Certified value - Chlorinated pesticides	
EOM	42.2 mg g ⁻¹	α-Chlordane 0.56 ng g ⁻¹
HCB	0.39 ng g ⁻¹	γ-Chlordane 0.46 ng g ⁻¹
Dieldrin	1.88 ng g ⁻¹	Aroclor 1260 53.2 ng g ⁻¹
	Certified value - PCB congeners and PBDE	
PCB 28	0.85 ng g ⁻¹	PCB 170 3.05 ng g ⁻¹
PCB 95	0.58 ng g ⁻¹	PCB 174 1.32 ng g ⁻¹
PCB 101	1.74 ng g ⁻¹	PCB 177 0.94 ng g ⁻¹
PCB 105	0.49 ng g ⁻¹	PCB 180 6.56 ng g ⁻¹
PCB 110	0.88 ng g ⁻¹	PCB 183 1.82 ng g ⁻¹
PCB 118	1.01 ng g ⁻¹	PCB 187 3.97 ng g ⁻¹
PCB 128	0.49 ng g ⁻¹	PCB 194 1.45 ng g ⁻¹
PCB 138	5.30 ng g ⁻¹	PCB 206 0.24 ng g ⁻¹
PCB 149	3.33 ng g ⁻¹	PBDE 100 0.23 ng g ⁻¹
PCB 153	8.59 ng g ⁻¹	
	Certified value - PCB congeners and PBDE	
EOM	36.7 mg g ⁻¹	Pyrene 40.0 ng g ⁻¹
Total aliphatics	244 ng g ⁻¹	Benzo [b] Fluoranthene 35.8 ng g ⁻¹
n-C ₁₇	373 ng g ⁻¹	Benzo [k] Fluoranthene 14.7 ng g ⁻¹
Naphthalene	14.8 ng g ⁻¹	Benz [a] Anthracene 19.2 ng g ⁻¹
Phenanthrene	15.8 ng g ⁻¹	Benzo [a] Pyrene 18.2 ng g ⁻¹
Chrysene	26.9 ng g ⁻¹	Benzo [g,h,i] Perylene 19.5 ng g ⁻¹
Fluoranthene	49.3 ng g ⁻¹	Dibenz [a,h] Anthracene 5.32 ng g ⁻¹

Food, Animal Plants, Drink

Code	Product	Unit
NIST-1598a	Inorganic Constituents in Animal Serum	2 vials x 5 mL
	Certified value	
	Cd 0.048 ± 0.004 µg/L	Ni 0.94 ± 0.18 µg/L
	Co 1.24 ± 0.07 µg/L	Rb 274 ± 19 µg/L
	Cs 0.64 ± 0.10 µg/L	Sb 1.00 ± 0.15 µg/L
	Cu 1580 ± 90 µg/L	Se 134.4 ± 5.8 µg/L
	Fe 1680 ± 60 µg/L	V 1.88 ± 0.11 µg/L
	Mn 1.78 ± 0.33 µg/L	Zn 880 ± 24 µg/L
NIST-919b	Sodium Chloride	30 g
	Certified value	
	wNaCl 99.835 % ± 0.020 %	
	wCl ⁻ 60.564 % ± 0.014 %	
	wNa ⁺ 39.2747 % ± 0.0075 %	
NIST-920	D-Mannitol	50 g
	Certified value	
	D-Mannitol 99.8 ± 0.1 %	Loss on drying <0.02
	D-Glucitol 0.1 ± 0.1 %	Ash <0.001
	Total Alditol 99.9 ± 0.1 %	Insoluble matter <0.001
NIST-1595	Fish Homogenate (Methyl Mercury)	2 g
	Certified value	
	Tripalmitin 99.5 ± 0.2 %	
NIST-927e	Bovine Serum Albumin (7 % Solution)	10 ampoules x 2.2 mL
	Certified Bovine Serum Albumin Concentration by Amino Acid Analysis	
	BSA Concentration 67.38 g/L ± 1.38 g/L	
	Reference Bovine Serum Albumin Concentration by the Biuret Method	
	BSA Concentration 69.58 g/L ± 1.30 g/L	
NIST-927f	Bovine Serum Albumin (7 % Solution)	10 ampoules x 2.2 mL
	Certified Bovine Serum Albumin Concentration by Amino Acid Analysis	
	BSA Concentration 83.2 g/L ± 0.7 g/L	
	Reference Bovine Serum Albumin Concentration by the Biuret Method	
	BSA Concentration 87.6 g/L ± 2.7 g/L	
NIST-955c	Toxic Metals in Caprine Blood	4 vials x 2 mL
	Certified value - Level 1	Certified value - Level 2
	Cd 0.0317 ± 0.0062 µg/L	As 21.66 ± 0.73 µg/L
	Pb 0.424 ± 0.011 µg/dL	Cd 2.16 ± 0.22 µg/L
	Hg(Total) 0.017 ± 0.011 µg/L	Pb 13.950 ± 0.080 µg/dL
	Se 278.7 ± 2.4 µg/L	Hg(Total) 5.42 ± 0.66 µg/L
	Certified value - Level 3	Certified value - Level 4
	As 52.7 ± 1.1 µg/L	As 78.8 ± 4.9 µg/L
	Cd 5.201 ± 0.038 µg/dL	Cd 10.26 ± 0.11 µg/L
	Pb 27.76 ± 0.16 µg/dL	Pb 45.53 ± 0.27 µg/dL
	Hg(Total) 17.8 ± 1.6 µg/L	Hg(Total) 35.4 ± 2.0 µg/L

Food, Animal
Plants, Drink

Food, Animal Plants, Drink

Code	Product	Unit
NIST-1946	Lake Superior Fish Tissue	5 x 7-9 grams
	Certified value - PCB Congener (µg/kg)	
	PCB 44 (2,2',3,5'-Tetrachlorobiphenyl)	4.66 ± 0.86
	PCB 49 (2,2',4,5'-Tetrachlorobiphenyl)	3.80 ± 0.39
	PCB 52 (2,2',5,5'-Tetrachlorobiphenyl)	8.1 ± 1.0
	PCB 66 (2,3',4,4'-Tetrachlorobiphenyl)	10.8 ± 1.9
	PCB 70 (2,3',4',5'-Tetrachlorobiphenyl)	14.9 ± 0.6
	PCB 74 (2,4,4',5'-Tetrachlorobiphenyl)	4.83 ± 0.51
	PCB 77 (3,3',4,4'-Tetrachlorobiphenyl)	0.327 ± 0.025(m)
	PCB 87 (2,2',3,4,5'-Pentachlorobiphenyl)	9.4 ± 1.4
	PCB 95 (2,2',3,5',6'-Pentachlorobiphenyl)	11.4 ± 1.3
	PCB 99 (2,2',4,4',5'-Pentachlorobiphenyl)	25.6 ± 2.3
	PCB 101 (2,2',4,5,5'-Pentachlorobiphenyl)	34.6 ± 2.6
	PCB 105 (2,3,3',4,4'-Pentachlorobiphenyl)	19.9 ± 0.9
	PCB 110 (2,3,3',4',6'-Pentachlorobiphenyl)	22.8 ± 2.0
	PCB 118 (2,3',4,4',5'-Pentachlorobiphenyl)	52.1 ± 1.0
	PCB 126 (3,3',4,4',5'-Pentachlorobiphenyl)	0.380 ± 0.017
	PCB 128 (2,2',3,3',4,4'-Hexachlorobiphenyl)	22.8 ± 1.9
	PCB 138 (2,2',3,4,4',5'-Hexachlorobiphenyl).....	115 ± 13
	PCB 146 (2,2',3,4',5,5'-Hexachlorobiphenyl)	30.1 ± 3.5
	PCB 149 (2,2',3,4',5',6'-Hexachlorobiphenyl)	26.3 ± 1.3
	PCB 153 (2,2',4,4',5,5'-Hexachlorobiphenyl)	170 ± 9
	PCB 156 (2,3,3',4,4',5'-Hexachlorobiphenyl).....	9.52 ± 0.51
	PCB 169 (2,2',3,4,4',5'-Hexachlorobiphenyl)	0.106 ± 0.014
	PCB 170 (2,2',3,3',4,4',5'-Heptachlorobiphenyl)	25.2 ± 2.2
	PCB 180 (2,2',3,4,4',5,5'-Heptachlorobiphenyl)	74.4 ± 4.0
	PCB 183 (2,2',3,4,4',5',6'-Heptachlorobiphenyl)	21.9 ± 2.5
	PCB 187 (2,2',3,4',5,5',6'-Heptachlorobiphenyl)	55.2 ± 2.1
	PCB 194 (2,2',3,3',4,4',5,5'-Octachlorobiphenyl)	13.0 ± 1.3
	PCB 195 (2,2',3,3',4,4',5,6'-Octachlorobiphenyl)	5.30 ± 0.45
	PCB 206 (2,2',3,3',4,4',5,5',6'-Nonachlorobiphenyl)	5.40 ± 0.43
	PCB 209 (Decachlorobiphenyl)	1.30 ± 0.21
NIST-2385	Slurried Spinach	4 x 70 g
	Certified value	
	Ca	624 ± 40 mg/kg
	Fe	3.80 ± 0.39 mg/kg
	Mg	8.1 ± 1.0 mg/kg
	Mn	10.8 ± 1.9 mg/kg
	P	14.9 ± 0.6 mg/kg
	K	4.83 ± 0.51 mg/kg
	Zn	0.327 ± 0.025(m) mg/kg
NIST-2387	Peanut butter - Fat, fatty acids, trace elements and tocopherols	3 x 170 g
	This Standard Reference Material (SRM) is intended primarily for use in validating methods for determining proximates, fatty acids, calories, vitamins, elements, amino acids, and aflatoxins in peanut butter and similar matrices.	
	Certified concentrations for fat and selected fatty acids	
		Mass fraction (g/100 g)
	Fat (extractable)	51.6 ± 1.4

Food, Animal Plants, Drink

Code	Product	Unit
------	---------	------

Mass Fraction (g/100 g)

Tetradecanoic acid (C14:0) (Myristic acid)	0.025 ± 0.002	0.024 ± 0.002
Hexadecanoic acid (C16:0) (Palmitic acid)	5.18 ± 0.15	4.94 ± 0.15
(Z)-9-Hexadecenoic acid (C16:1 n-7) (Palmitoleic acid)	0.046 ± 0.011	0.044 ± 0.010
Octadecanoic acid (C18:0) (Stearic acid)	2.23 ± 0.08	2.13 ± 0.08
(Z)-9-Octadecenoic acid (C18:1 n-9) (Oleic acid)	24.43 ± 0.94	23.38 ± 0.90
(Z)-11-Octadecenoic acid (C18:1 n-7) (Vaccenic acid)	0.266 ± 0.017	0.255 ± 0.016
(Z,Z)-9,12-Octadecadienoic acid (C18:2 n-6) (Linoleic acid)	13.75 ± 0.43	13.15 ± 0.41
(Z,Z,Z)-9,12,15-Octadecatrienoic acid (C18:3 n-3) (Linolenic acid)	0.031 ± 0.001	0.030 ± 0.001
Eicosanoic acid (C20:0) (Arachidic acid)	0.739 ± 0.030	0.710 ± 0.029
(Z)-11-Eicosenoic acid (C20:1 n-9) (Gondoic acid)	0.669 ± 0.032	0.643 ± 0.031
Docosanoic acid (C22:0) (Behenic acid)	1.88 ± 0.08	1.81 ± 0.08
Tetracosanoic acid (C24:0) (Behenic acid)	0.808 ± 0.045	0.781 ± 0.044

Certified concentration values for elements and tocopherol

Mass fraction (mg/kg)		Mass fraction (mg/kg)	
Ca	411 ± 18	K	6070 ± 200
Cu	4.93 ± 0.15	Na	4890 ± 140
Fe	16.4 ± 0.8	Zn	26.3 ± 1.1
Mg	1680 ± 70	δ - Tocopherol	10 ± 3
Mn	16.0 ± 0.6	γ - Tocopherol	100 ± 19
P	3378 ± 92	α - Tocopherol	108 ± 11

SRM-2976

Mussel tissue -Trace elements and methylmercury

25 g

Certified value

As	13.3 mg/kg	Se	1.80 mg/kg
Cd	0.82 mg/kg	Zn	137 mg/kg
Cu	4.02 mg/kg	Methylmercury	27.8 Pg/kg
Fe	171 mg/kg	Total mercury	61.0 Pg/kg
Pb	1.19 mg/kg		

SRM-1577c

Mussel tissue -Trace elements and methylmercury

25 g

NIST-1577c is intended primarily for use in evaluating the accuracy of analytical methods for selected elements in animal tissues and other biological materials.

Certified values for mass fractions (on a dry-mass basis) of selected elements

Ag	5.9 ± 1.6 µg/kg
As	19.6 ± 1.4 µg/kg
Ca	131 ± 10 mg/kg
Cd	97.0 ± 1.4 µg/kg
Co	0.300 ± 0.018 mg/kg

Food, Animal Plants, Drink

Code	Product	Unit
NIST-3281	Cranberry (Fruit) - Organic acids It consists of five packets, each containing approximately 6 g of freeze-dried, powdered fruit. Certified value - (dry-mass basis) Citric acid 79.2 ± 6.4 mg/g Malic acid 40.6 ± 2.3 mg/g Quinic acid 47.8 ± 6.8 mg/g Shikimic acid 2.09 ± 0.72 mg/g	5 x 6 g
NIST-3256	Green Tea-Containing Solid Oral Dosage Form It is intended primarily for use in validating analytical methods for the determination of catechins, xanthines, and toxic elements in solid oral dosage forms containing green tea and in similar matrices. Certified value - Selected Catechins, Gallic Acid, and Xanthines (+)-catechin 2.63 ± 0.18 mg/g (-)-epicatechin 12.0 ± 2.6 mg/g (-)-epicatechin gallate 17.1 ± 2.6 mg/g (-)-epigallocatechin 30.7 ± 5.7 mg/g (-)-epigallocatechin gallate 71.1 ± 6.6 mg/g (-)-gallocatechin 7.55 ± 0.28 mg/g Gallic acid 13.10 ± 0.49 mg/g Caffeine 70.0 ± 2.6 mg/g Theobromine 1.04 ± 0.15 mg/g Certified value - Toxic Elements Arsenic 0.269 ± 0.019 mg/kg Cadmium 0.025 ± 0.002 mg/kg Lead 0.316 ± 0.030 mg/kg Mercury 0.014 ± 0.002 mg/kg	5 x 2.5 g
NIST-3248	Ginkgo-Containing Tablets is intended primarily for use in validating analytical methods for the determination of flavonoids, terpene lactones, and toxic elements in ginkgo-containing tablets and similar matrices. Certified value - Flavonoid Aglycones and Selected Terpene Lactones Quercetin 7.56 ± 0.40 mg/g Kaempferol 7.19 ± 0.70 mg/kg Isorhamnetin 1.90 ± 0.22 mg/kg Total Aglycones 16.6 ± 1.2 mg/kg Ginkgolide B 1.12 ± 0.20 mg/kg Ginkgolide C 2.36 ± 0.42 mg/kg Total Terpene Lactones 11.8 ± 1.4 mg/kg Certified value - Lead Lead 0.7753 ± 0.0089 µg/g Certified value - Selected Terpene Lactones Ginkgolide A 2.42 ± 0.63 mg/g Ginkgolide J 0.81 ± 0.36 mg/g Bilobalide 5.7 ± 1.2 mg/g Certified value - Selected Terpene Lactones Arsenic 56.5 ± 4.3 ng/g Cadmium 1.56 ± 0.19 ng/g Mercury 0.271 ± 0.034 ng/g	5 x 1 g

Food, Animal Plants, Drink

Code	Product	Unit	
NIST-3251	Saw Palmetto (<i>Serenoa repens</i>) Extract	5 x 1 mL	
	This Standard Reference Material (SRM) is intended primarily for use in validating analytical methods for the determination of phytosterols, fatty acids, β -carotene, and γ -tocopherol in extracts of <i>Serenoa repens</i> (saw palmetto) and similar matrices.		
	Certified value - Selected Phytosterols		
	Campesterol	0.533 \pm 0.031 mg/g	
	β -Sitosterol	1.666 \pm 0.064 mg/g	
	Stigmasterol	0.247 \pm 0.040 mg/g	
	Certified value - Total β -Carotene and γ -Tocopherol		
	Total β -carotene	46.8 \pm 4.6 μ g/g	
	γ -Tocopherol	280 \pm 13 μ g/g	
	Certified value - Cycloartenol		
	Cycloartenol	0.772 \pm 0.008 μ g/g	
	Certified value - β -Carotene Isomers and δ -Tocopherol		
	Trans- β -carotene	36.4 \pm 5.6 μ g/g	
	9-Cis- β -carotene	10.4 \pm 1.2 μ g/g	
δ -Tocopherol	35.3 \pm 0.5 μ g/g		
NIST-3299	Ground Turmeric (<i>Curcuma longa</i> L.) Rhizome	25 g	
	It is intended primarily for use in validating analytical methods for the determination of curcuminoids and elements in ground turmeric (<i>Curcuma longa</i> L.) rhizomes and similar matrices.		
	Certified value - Curcuminoids		
	Bisdemethoxycurcumin	3.66 \pm 0.23 mg/g	
	Desmethoxycurcumin	3.79 \pm 0.37 mg/g	
	Curcumin	12.17 \pm 0.56 mg/g	
	Certified value - Elements		
	As	0.332 \pm 0.042 mg/kg	
	Cd	1.73 \pm 0.24 mg/kg	
	Pb	1.20 \pm 0.11 mg/kg	
	NIST-3300	Curcumin Extract of Turmeric (<i>Curcuma longa</i> L.) Rhizome	5 x 1 g
It is intended primarily for use in validating analytical methods for the determination of curcuminoids in curcumin extracts of turmeric (<i>Curcuma longa</i> L.) rhizomes and similar matrices.			
Certified value - Curcuminoids			
Bisdemethoxycurcumin		18.06 \pm 0.75 mg/g	
Desmethoxycurcumin		115.4 \pm 5.5 mg/g	
Curcumin	815 \pm 25 mg/g		
TORT-3	Lobster hepatopancreas reference material for trace metals	15 g	
	Analyte	Mass fraction, mg/kg	Type of value
	arsenic (a,b)	59.5 \pm 3.8	certified
	arsenobetaine (as As) (c,g)	54.9 \pm 2.5	certified
	cadmium (b,d)	42.3 \pm 1.8	certified
	chromium (b,d)	1.95 \pm 0.24	certified
	cobalt (a)	1.06	information
	copper (a,b,d)	497 \pm 22	certified

Food, Animal Plants, Drink

Code	Product	Unit
	iron (a,b)	179 ± 8 certified
	lead (a,d)	0.225 ± 0.018 certified
	manganese (a,d)	15.6 ± 1.0 certified
	mercury (d)	0.292 ± 0.022 certified
	Methylmercury (as Hg) (e,f) ...	0.137± 0.012 certified
	molybdenum (a,d)	3.44 ± 0.12 certified
	nickel (a,d)	5.30 ± 0.24 certified
	selenium (a,d)	10.9 ± 1.0 certified
	strontium (b,d)	36.5 ± 1.6 certified
	tin (a,d)	0.029 information
	vanadium (a,d)	9.1 ± 0.4certified
	zinc (b,d)	136 ± 6 certified
